



## Components of Kartrol EXE



Console Table Top Assembly  
*Part# 1-60-9005*

### Individual kart control\*\*

**Four Speeds Available (Adjustable MED, SLOW AND STOP\*\*)**

Green (GO) = Full Speed

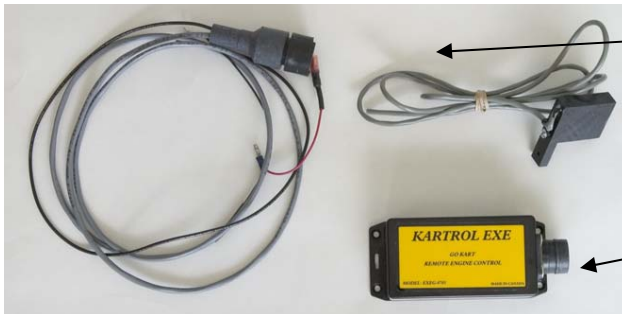
Blue (MED) = Medium Speed

Yellow (SLOW) = Slow Speed

Red (STOP) = Engine Idle or Motor Stop

\*\*Programmer/Shop Tester needed for adjustment and programming

*Part# 1-60-9006\*\**



Wire Harness Gas W/Pit Sensor  
*Part# 1-60-9045-SENSR*

Kart Control Receiver Bare  
*Part# 1-60-9026*



Pit Control Generator  
*Part# 1-60-9003*



Optional:  
Remote Switch Box  
*Part# 1-60-9009*



Recommended  
Optional:  
Programmer/Shop  
Tester  
*Part# 1-60-9006*

# KARTROL EXE - COMPONENTS/TRACK LAYOUT



1

Top view of Table Top Console.  
 Optional Remote (#1-60-9009) switch box plugs into this DIN connector

Optional weather proof protective enclosure for table top console (part #CC-KARTROL-EXE)

## Kartrol EXE Table Top Console

The Kartrol EXE table top console should be located in the pit area in such a place where as the attendant has a clear view of the track and the track operators.

Consists of parts #1-60-9005 (console) and #1-60-9013 (transformer). See page 3 for installation instructions.



2

## Kartrol EXE Pit Controller Generator (Pit Entrance)

Location determined by layout of track. Position should be determined by placing pit loop in such a place as to ensure go-karts are completely slowed to pit speed before entering the pit area. (See Kartrol EXE Manual for installation instructions).

Consists of parts #1-60-9003 (controller) and #1-60-9014 (transformer). See page 2 for installation instructions.



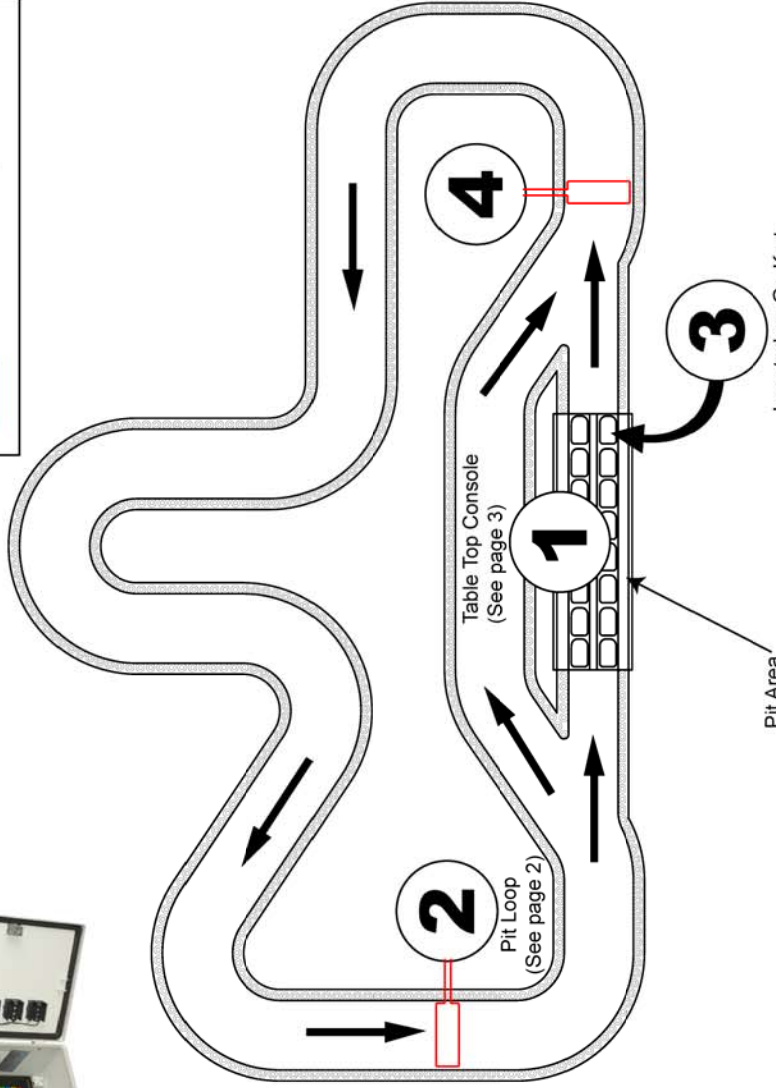
3

## Kartrol EXE Go-Kart Control Sensor/Receiver

Located on each go-kart  
 Consists of part #1-60-9007 (sensor) and optional #1-60-9000 (receiver)

## Legend

- direction of travel
- Go-Kart
- Pit Loop wire



4

## Kartrol EXE Pit Controller Generator (Pit Exit)

Location determined by layout of track. Position should be determined by placing pit loop in such a place as to ensure go-karts are triggered to track speed upon leaving the pit area (See Kartrol EXE Manual for installation instructions).

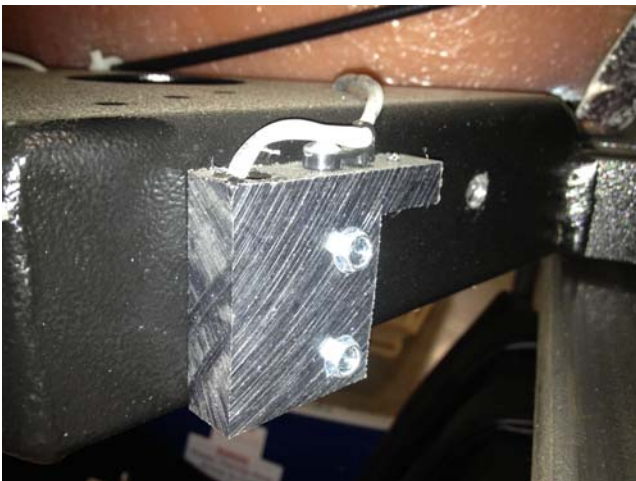
Consists of parts #1-60-9003 (controller) and #1-60-9014 (transformer). See page 2 for installation instructions.



## Typical go-kart installation of Kartrol EXE



Receiver mounted under the spoiler.



Pit sensor mounted to underside of kart chassis. Sensor must have unobstructed view of track surface.



Wires harness is grounded to engine/motor and then connects to stop switch.